

A woman in a black dress is shown from the waist up, her hands positioned to adjust a black vase containing dried, brown leaves. The vase sits on a dark, reflective surface, likely a table. To the right of the vase, several walnuts are scattered on the surface. The background is a dark, solid color, creating a minimalist and elegant aesthetic. The lighting is soft, highlighting the textures of the dress, the leaves, and the walnuts.

Inside the
difference

ARMONY

Materials, technology, emotion and design: the technical essence that defines Armony.

It calls for a balanced combination of functionality and conviviality, to transform the space into a place that is able to welcome, last and inspire. Armony's Research and Development Centre designers conceive every last detail to stand the test of time and meet the demands of contemporary life, by merging technical performance with aesthetics.

Circular Beauty

_ 04

Invisible strength

_ 12

Details make elegance: Black Edition

_ 20

Storage Specialist

_ 26

Living Materials

_ 32

It's all about People

_ 38



Circular *Beauty*

Drawing inspiration from nature to build the future.

The circular economy is a production and consumption model based on a principle that is as simple as it is powerful: nothing is wasted, everything is transformed.

This philosophy inspired by natural cycles entails the sharing, reuse, repair, reconditioning and recycling of existing materials and products, to extend their life cycle and minimise waste. Armony has decided to adopt this approach as the backbone of its way of manufacturing.

In this catalogue, we explain that we believe that the circular economy means embracing precise decisions, such as using eco-friendly panels made from recycled or renewable materials, striving to reduce emissions and adopting increasingly sustainable industrial processes.

Nothing is wasted, everything is transformed. Our circular economy, in 6 steps.

1. Raw materials

Any production process starts with the raw material. Within a circular development strategy, this input tends to be decreased in order to favour the reuse and recycling of raw materials. We have also set ourselves the goal of ensuring that all the new material used is replanted, in order to reduce the impact on the ecosystem.

2. Design work

At Armony, we rethink products and productive processes to minimise waste, maximise the reuse of resources and regenerate natural systems, by focusing on every step of a product's life cycle.

Clean energy

The investments into clean energy made by Armony in recent years are a clear sign of the direction the company has taken for the future of our planet.

3. Production /remanufacturing

We are committed to reducing the consumption of raw materials, wood, energy and water by optimising production processes and utilising renewable sources. Products are designed to be durable, repairable, reusable and recyclable, by using sustainable materials and reducing the environmental impact during production. It is at this specific stage that we leverage concrete actions to cut waste and reuse scrap, by networking and involving other companies with which to cooperate in order to share resources, scrap and know-how and create systems of industrial symbiosis in which the waste of one company becomes a resource for another.

Eco-friendly packaging

When planning its production department investment strategy, Armony made furniture and panel packaging machinery an absolute priority. This constantly-evolving function aims to completely do away with the use of conventional plastics by the end of 2026, in favour of more sustainable and environmentally-conscious packaging options.

6. Recycling

Armony has forged partnerships with industry leaders specialising in the manufacture of melamine-faced wood-based panels. Every year, these production facilities accumulate thousands of tonnes of post-consumption wood recovered through separate waste collection, demolition work and furniture manufacturers. Using sophisticated technologies and specific processes, this production 'scrap' is given a second life when it is made into new panels that consist entirely of post-consumption wood.

The recovery process

The regenerative economy model also applies to the other materials (iron, plastic, paper, aluminium, sand and stones) that are found in wood waste and can, in turn, also be forwarded to the relevant recycling and disposal supply chains. Armony is currently able to recover 99.98% of all incoming raw materials.

5. Waste collection

Separate waste collection plays a key role in this process, by enabling the recycling and reuse of materials. It allows us to facilitate and speed up collection and recycling processes, while saving energy.

4. Consumption, use, reuse and repair

Our production and consumption model focuses on extending product life cycles as far as is possible, according to the philosophy that a durable product is one that does not need to be disused and replaced. This is one of our main goals and one we strive to achieve with dedication and commitment.

In a circular economy, an end is considered a new beginning that restarts the cycle. It is a model that is in keeping with the pace of nature and is respectful of the environment, which allows sustainable development without time constraints.



In a sector like the furniture industry, in which the transformation of materials is at the basis of the end products, supplier selection is a fundamental strategic lever. To ensure the quality on which it has built its reputation,

Armony only uses Italian, German and Austrian partners that are known Europe-wide for their high production standards, sustainability-oriented approach and adoption of the most advanced technologies.

Building the *future* today, with *conscious* and solid choices.

Photo: the Egger Italia S.p.A. factory in Caorso, near Piacenza, Italy.



FSC® | Forest Stewardship Council

FSC® certification is available upon request for contract design projects, to confirm our commitment to protecting the environment and natural resources.

The **FSC® (Forest Stewardship Council)** trademark is internationally-acknowledged and guarantees that the wood materials used originate from **responsibly-managed** forests and respect environmental balance, biodiversity and the rights of local communities. Choosing an FSC®-certified product means **contributing to forest protection and a more sustainable future**, without compromising on design quality and excellence.

At Armony, we consider this certification to be much more than a mere trademark: it is a value that reflects our philosophy of creating innovative and refined kitchens with an authentic focus on people and the planet. A solid act of responsibility towards the future we want.

CARB2

At Armony, we believe that the quality of a kitchen is measured not only by its aesthetic details or technical solutions, but also by the quality of its constituent materials. This is why we use only **class E1 panels that are certified** in accordance with CARB2, one of the world's most stringent standards in terms of formaldehyde emissions.

Conceived in the United States to ensure cleaner air and more salubrious environments, **CARB2 certification imposes strict limits on the emission of volatile substances in wooden panels**. Although it is only a mandatory requirement in California, Armony has chosen to comply with this standard for all its products, wherever they are distributed. The carcasses of our cabinets are made using 18 mm-thick low-emission melamine panels edged with 8/10 ABS trim of the same colour, for a technically impeccable and safe result.

UThis choice clearly reflects how much we care about the **well-being of the people who live in our kitchens on a daily basis**.



Layer of pressed melamine resin-impregnated paper.

A thick and sturdy wooden core layer, designed for a solid, durable structure.

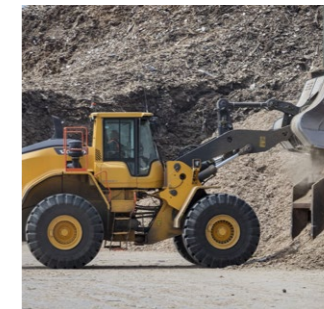
Wooden core composed of finer particles, to ensure an even and compact surface.

The second life of the material and the inner strength of ecologically-sustainable panels.

The panels used to build our cabinetry originate from highly automated factories in which processing is carried out using unique, patented industrial processes that are capable of turning recycled post-consumption wood into high-quality panels.



In the photo: Separation of materials from any impurities and foreign components, thanks to systems equipped with magnetic systems, optical sensors and induction separators.



Giving wood *new life* in order to generate value.

The first step is the recovery of post-consumption wood materials. Using sophisticated mechanical sorting equipment, the materials are screened for impurities and foreign components like metals, aluminium and plastic - using plant equipped with magnetic systems, optical sensors and induction separators - which are subsequently recycled.

The selected wooden material is cleaned, refined, blended and dried to obtain an even and consistent mixture that is ideal for manufacturing low-emission, eco-friendly panels. This marks the start of the long process required to manufacture the panels that are then coated with the layer of pressed, melamine resin-impregnated paper that serves both aesthetic and protective functions.



Invisible strength

Technical construction: every last detail matters. Armony cabinets are the result of a meticulous technical design process and ever-evolving construction techniques. Be it visible or concealed, each part is designed to ensure solidity, precision and longevity.

Wall units

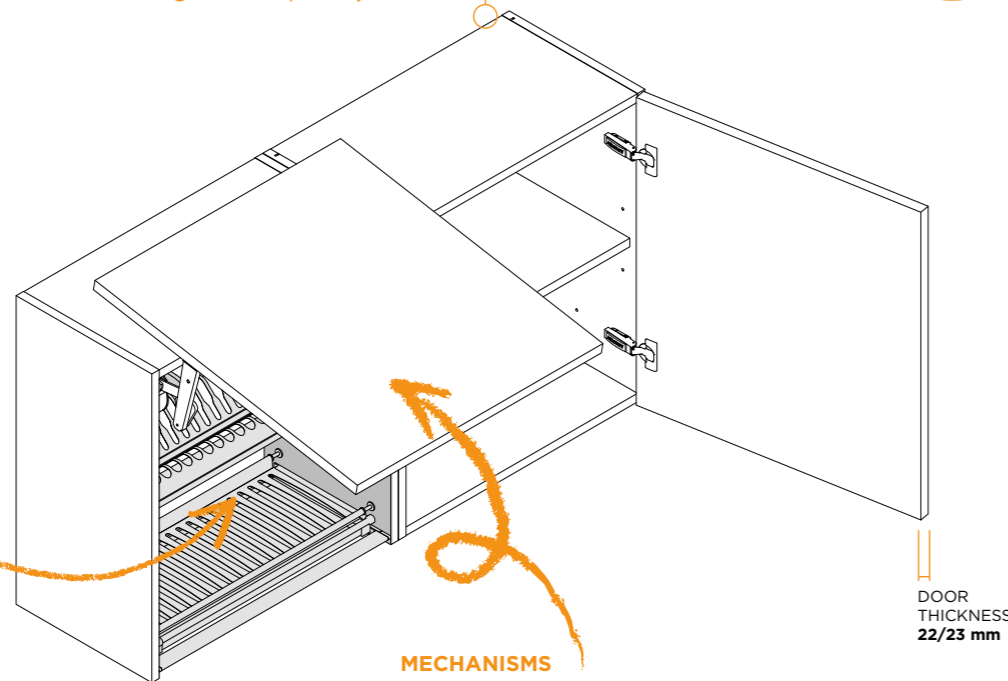
HOOD WALL UNIT
These units can be customised with removable panels or hood and chimney cover panels.

WALL UNIT BRACKETS
The inner wall unit brackets have a load bearing capacity of 130 kg per pair, in accordance with the LGA load bearing test and allow height and depth adjustments.

DRAINAGE RACKS
Made from a carefully shaped mould and with a watertight drip tray. Available in black finish.



DRAINAGE UNIT
Inner side panels protected by two pieces of sheet aluminium.



MECHANISMS
Four opening systems approved in accordance with the LGA resistance test, which requires products to withstand up to 30,000 opening-closure cycles.



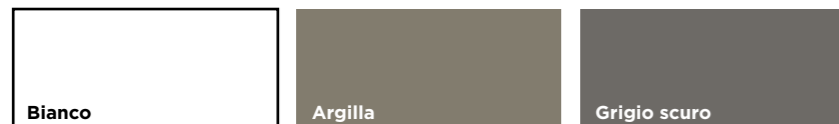
All structural elements - base, wall and tall units - are built with a carcass of class E1, 18 mm-thick, low-formaldehyde-emission, melamine panels with matching 8/10 ABS trim. We use high-density panels (780 kg/m³), which offer superior mechanical resistance and dimensional stability.

The same meticulous approach to construction can also be found in the less obvious but fundamental aspects that contribute to perceived quality over time, such as the 6 mm thick back panels, which improve

the sturdiness of the entire cabinet, the aluminium crossbars applied to all base unit top panels, the aluminium protection on the side panels of drainer wall units and bottoms of sink base units, designed to withstand humidity and wear over time, and much, much more.

Each solution is the result of a design approach that focuses on functional performance, resistance and integrated aesthetics, because true value lies in even the most discrete details.

Colori disponibili per la scocca:



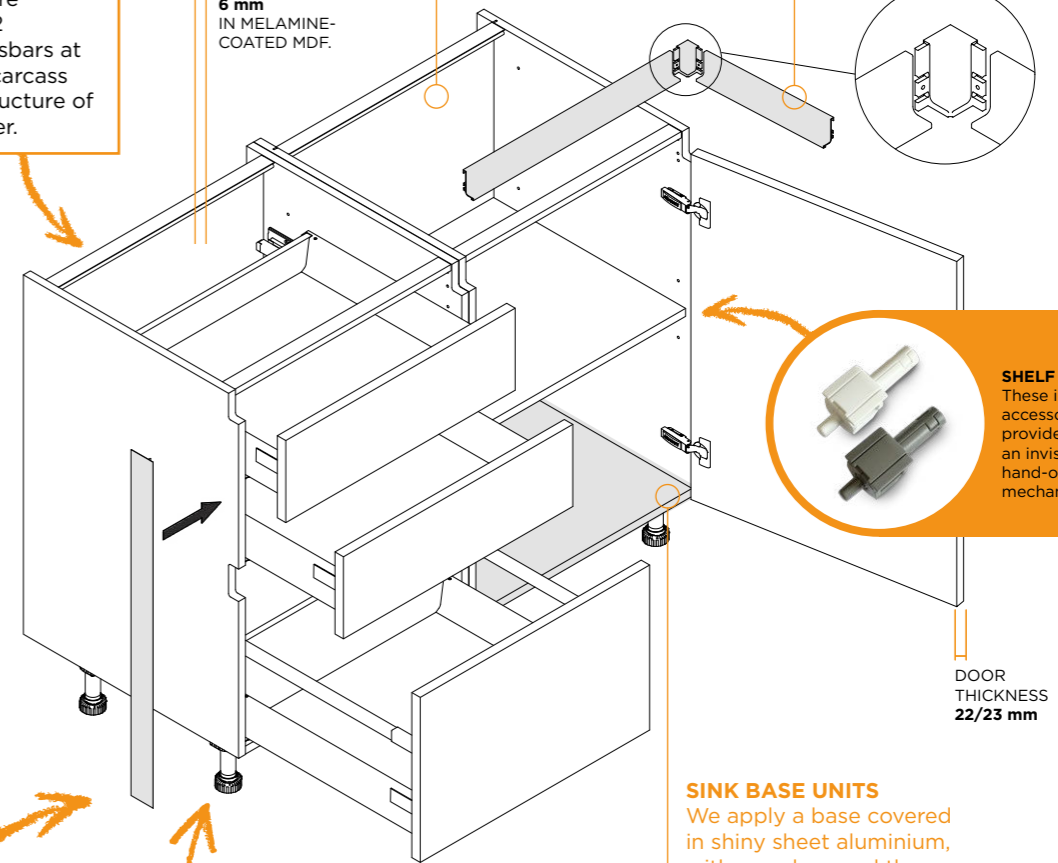
Base units

HOB BASE UNITS
Metal electromagnetic wave insulation screen for induction hobs.

GRIP PROFILES
Made from anodised aluminium extruded elements. The parts and plugs are made of aluminium and manufactured from solid materials using high-precision machinery.

ALUMINIUM CROSSBARS
All base units are provided with 2 aluminium crossbars at the top of the carcass to make the structure of the unit stronger.

BACK PANEL THICKNESS
6 mm
IN MELAMINE-COATED MDF.

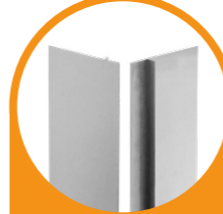


SHELF BRACKETS
These innovative accessories are provided with an invisible, hand-operated mechanism.

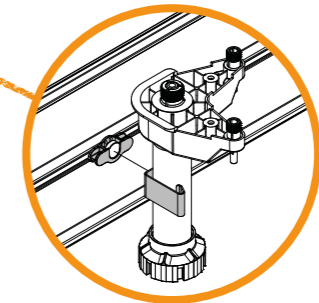
DOOR THICKNESS
22/23 mm

SINK BASE UNITS
We apply a base covered in shiny sheet aluminium, with a seal around the perimeter, to protect the structure of the unit and facilitate cleaning operations.

PLINTHS STANDARD
Anodised aluminium plinths fitted with a magnetic anchoring system allowing easy removal when required for inspection, cleaning and maintenance operations.



DISHWASHERS STANDARD
A spacer frame composed of three aluminium elements is available for dishwasher installation. To ensure maximum long-term quality, we also supply a pair of protective aluminium bands to protect the side panels of the adjacent base units.



Tall units

SHELVES

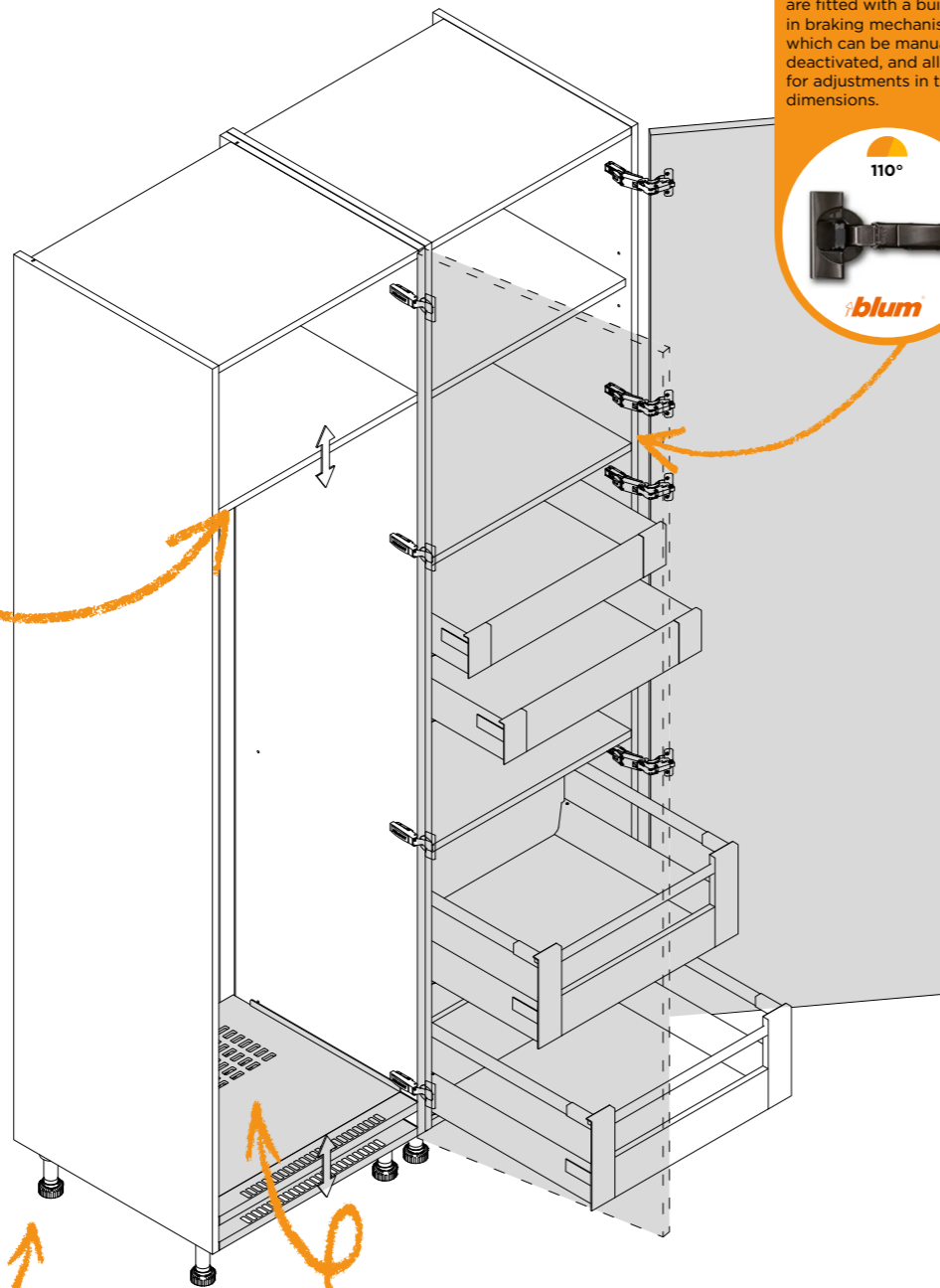
Aluminium reinforcement available for W 90 - 100 - 120 cm melamine shelves, in addition to the frontal aluminium profile serving aesthetic and structural purposes. 6 mm-thick smoked glass shelves or with black aluminium frame with smoked glass glazing available as options.



FEET H. 8-10-12 cm

Made in ABS, they are secured without requiring a through hole and have an adjustable height. Their triangular shape offers good structural support.

Adjustment tool:



HINGES
Designed to withstand 200,000 opening and closure cycles. They are fitted with a built-in braking mechanism, which can be manually deactivated, and allow for adjustments in three dimensions.



FRIDGE TALL UNIT

With an aluminium and ABS bottom panel, conceived to ensure electrical appliances adequate air circulation and to channel and remove any water loss, thus ensuring the tall unit absolute integrity.

Drawers

Quality mechanisms that make the difference. At Armony, functional performance merges with elegance in even the most hidden details. Our drawers and deep drawers are fitted with two lines of mechanisms manufactured by Blum, which is internationally acknowledged for the quality and longevity of its products. The decision to offer two different types, Antaro and Legrabox - the latter being the top of the range product - is anything but trivial, as it ensures our customers the freedom to choose between different styles, performance levels and costs, without having to compromise on reliability.

Both solutions ensure high load bearing capacities and have been tested to withstand 100,000 opening and closure cycles. The demure and essential full-extension runners allow drawers to be pulled all the way out of the carcass, allowing easy access to their content. The front panels can be adjusted in two directions, for ultra-precise cabinet adjustment. User comfort is ensured by the Blumotion system, an integrated braking device that dampens closure, to avoid tiresome banging and make opening and closure seamless and silent.

Available in different versions, including variants with smoked glass side infills, the mechanisms feature a Grigio Orion painted finish that matches the inside carcass of the cabinets, for a harmonious and stylish overall effect.



LEGRABOX

| L | Drawer and deep drawer capacity |
|-----|---------------------------------|
| 30 | 40 Kg |
| 45 | 40 Kg |
| 50 | 40 Kg |
| 60 | 40 Kg |
| 75 | 40 Kg |
| 90 | 40 Kg |
| 100 | 70 Kg |
| 120 | 70 Kg |

ANTARO

| L | Drawer and deep drawer capacity |
|-----|---------------------------------|
| 30 | 30 Kg |
| 45 | 30 Kg |
| 50 | 30 Kg |
| 60 | 30 Kg |
| 75 | 30 Kg |
| 90 | 30 Kg |
| 100 | 50 Kg |
| 120 | 50 Kg |



Display units

Display units are one of the most distinctive and refined elements of contemporary kitchens.

Far from being merely functional, they add interest to any composition and enhance spaces by introducing attractive transparencies and light effects, creating movement and lightness and adding visual value simply by being present.

Available in different configurations - base, wall and tall units - they blend in elegantly with versatile design projects. The internal lighting, which is available in different technical variants, further elevates their aesthetic results and the atmosphere. They can be sensor-, touch- or remote-controlled and the colour temperature can be adjusted to suit the interior's lighting conditions.

Doors are made with black anodised aluminium frames and smoked glass panels, making for a high visual impact combination in step with the latest preferences in terms of finishes. Inside, smoked glass shelves or modules provided with wood and aluminium accessories offer specific solutions for glasses, bottles and barware, thereby turning the display unit into a functional display space. The carcasses allow great scope for customisation and are available in all Armony range finishes, from melamine through to wood and lacquered options.

The latest addition is the AIR display cabinet in Antique Gold finish and Stop-Sol glass with a fully integrated, invisible hinge embedded in the frame and cabinet. This result is achieved thanks to a patented structural reinforcement with aluminum bars positioned in the bottom and lid.

A precise balance between technology and style, where every detail is designed to last, without ever losing its sense of beauty.





Details make *elegance:* Black Edition.

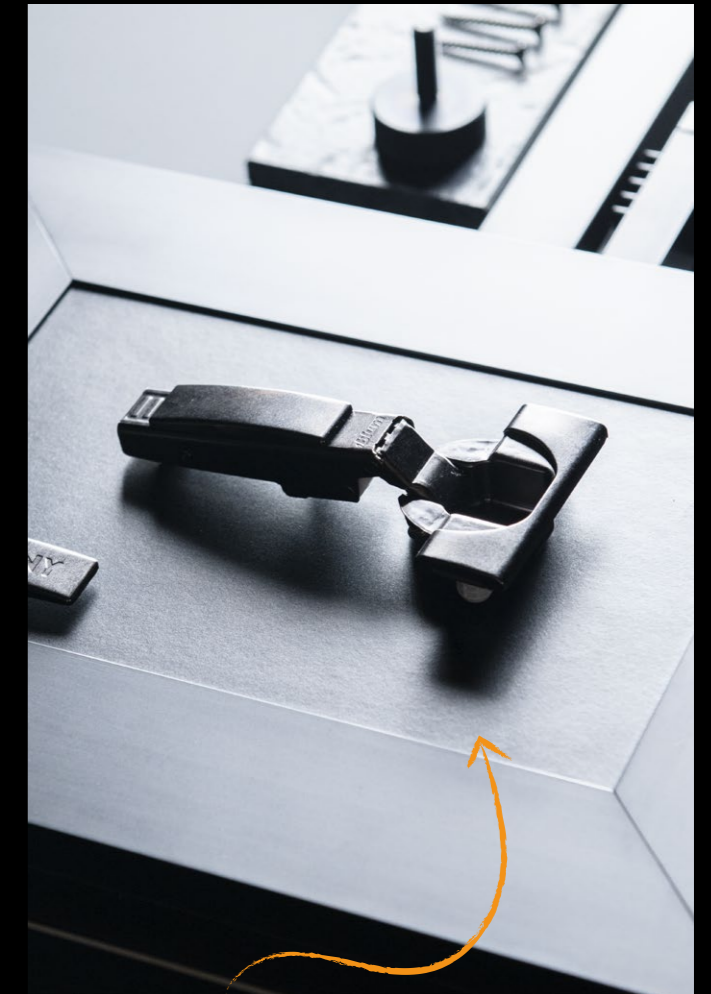
Screws, hinges, attachments, shelf brackets, grip profiles, unit profiles and rods, each one merges harmoniously into a refined palette, with **black or burnished finishes**, to ensure a higher perceived quality and unprecedented consistency in terms of style.

Technical elements go *black* and every part reflects its value

The evolution towards total black hardware is a meticulous, ongoing and ever-expanding process. Many items are already available with a black or burnished finish.

Even the smallest elements of our kitchen cabinetry elevate the overall aesthetic value

Optional shelves and internal accessories for a unique and instantly recognisable kitchen.



the absence of colour elevates the inside in a quest for harmony

Black Edition Technical aesthetic

This attention to detail transforms the interior of the furniture into a technical space of high design, capable of conveying consistency and value even in parts that are usually hidden from view.

Burnished hinges sleek, elegant and with a dark satin-effect to ensure aesthetic consistency even when the unit is open.

Black aluminium profiles applied to shelf edges, to enhance both their aesthetic and structural functions.

Support rods for shelves and other technical elements will gradually be replaced by black or burnished versions.

Burnished aluminium crossbars for base units ensuring even greater continuity and aesthetic value.

Wall unit grip profiles also available in black for complete visual continuity.

Glass doors with black aluminium frames for base, wall and tall units.

Glass shelf brackets with a black finish, small but crucial for visual simplicity.

Burnished screws and fasteners, invisible but visually harmonious.

Gap-filler side profiles for ovens, to follow the aesthetic of black appliances, which are increasingly used, in keeping with our aesthetic vision.

Internal smoked glass shelves with a black aluminium frame.

Matching accessories and LED lamps in black.

Chromatic continuity and structural design

The carcass comes in three different finishes, the most popular being the dark grey option, which is chosen for its versatility and because it pairs perfectly with black hardware and the Legrabox and Antaro drawers and deep drawers in Orion grey, a shade designed to blend in elegantly with the rest of the carcass.

At Armony, we dedicate the same attention to designing the inside of our units as the outside. Each opening mechanism reflects a consistent design approach, each technical detail becomes a style and structural design choice. A new Collection is under development which will exclusively feature the Black Edition aesthetic to carcasses, drawers and deep drawers, to create an exclusive offering with a bold, contemporary spirit.

This evolution is the climax of the process of aesthetic and functional harmonisation that we are pursuing: an all-black interior - from the structural surfaces to the technical parts - capable of expressing a profound, sleek and sophisticated elegance.



The interior of our units reflects the same care and aesthetic vision as the exterior parts. The basic structure is built to offer maximum longevity, visual consistency and perceived tactile and visual quality. **Black is not a passing fad, it is a sign, a symbol of meticulous care, precision and respect for both the design project and the customer.**

At Armony, we believe that excellence lies in the little things. Materials matter, and so does design. However, **what really sets a high-end product apart from the competition is invisible care**, the kind that only a watchful eye is able to notice: colour-coordinated joints, harmony between hidden components and the silent beauty of the technical solutions.

It was with this in mind that we created the **Black Edition project, an ongoing stylistic and functional evolution that turns conventional technical elements into parts with a high aesthetic value.**

This vision is not simply an aesthetic choice, but **also the tangible result of strategic production department investments**, with the gradual introduction of new technologies and specific supplies to facilitate this transition. Black Edition is emblematic of a company that does not settle for manufacturing functional furniture, but instead strives **to offer an experience, a visual emotion and tangible consistency.**

Storage *specialist*

**In contemporary kitchens,
all space is precious.**

Armony interprets this change with a refined approach to smart storage, by merging aesthetics, ergonomics and innovation.

Internal unit organisation is no longer simply a practical matter, but an essential part of the design and everyday experience. Being a 'Storage Specialist' means much more than simply offering storage accessories, it means designing solutions capable of improving comfort and the use of space with sophisticated mechanisms and functional details.

From pull-out systems to retracting doors, through to the new hybrid configurations currently being developed, Armony makes ongoing investments to maximise storage organisation without compromising in terms of aesthetic results.

Rationalising space is not simply a practical necessity but also an aesthetic and functional choice that makes a kitchen a tidier, more efficient and more fluid space.





The message is clear: designing *space* means designing *well-being*

The focus of this evolution is a comprehensive range of internal mechanisms conceived to exploit every last centimetre and offer highly-customisable furnishing solutions. We have long-standing partnerships with industry leaders such as Vibo, an Italian company specialising in high-quality storage systems, and select German suppliers for the more sophisticated components.

Each mechanism has been designed to stand the test of time, with resistant materials and a pared-back design that perfectly reflects the contemporary aesthetic of the collection.

Looking ahead is an essential aspect of the Armony philosophy. We are developing a new generation of multipurpose modules and systems for storing small appliances - from coffee machines to mixers, food processors to cocktail equipment- inside kitchen cabinets. This concept aims to create versatile spaces able to adapt to suit dynamic lifestyles and increasingly sophisticated habits.

We invest in technology and research with the aim of transforming ideas into products and accessories that strike an ideal balance between design and functional performance.

Highly-evolved functional performance for an increasingly smart kitchen.

to create versatile spaces able to adapt to suit dynamic lifestyles and increasingly sophisticated habits. This is because, even here, true elegance lies in the invisible details.



PULL-OUT BASE AND TALL UNITS
with sliding baskets that transform storage into a natural and intuitive action.

CORNER MECHANISMS
that rotate or pull out when the door is opened are ideal for rationalising spaces that are often unused.

CONCEALED SYSTEMS
designed for multi-purpose spaces are perfect for hiding workstations or small appliances.

RETRACTING DOORS
are smart, technical solutions that are ideal for creating concealed areas, such as breakfast nooks, laundry rooms, pantries or whole sections of the kitchen.

The organisation of interiors is not just a practical matter, but **an integral part of design** and everyday experience.



soft-close mechanism



Corner mechanism able to transform even the most inconvenient and difficult to reach corners into a functional space.



Full-extension runners with a soft-close mechanism and three-dimensional adjustment.



Kit consisting of shelves with millerighe aluminium surrounds and a non-slip surface.



Mechanism that manoeuvres shelves when the door is opened or closed



VIBO



Living *materials*

In a kitchen, materials are never merely surfaces, but feelings, ambiance and personality. They are something that is seen, touched and experienced every day.

Armony considers materials an essential part of any design project, living components that define the aesthetic language and perceived quality of the cabinetry. Behind each finish there is a choice, behind each choice there is research: not just to obtain a sleek visual effect, but also to ensure longevity, functional performance and lasting beauty.

The variety of materials and technologies available allows Armony to offer a vast range of solutions to satisfy different styles and budgets, while ensuring the same meticulous level of care when it comes to design. This is because, at Armony, we consider compositional freedom and consistency between aesthetics, value and performance essential aspects of quality.

**At Armony, *lacquering*
is more than a mere
finish, it is a fully-blown
expression of identity.**

Lacquering the Armony way

It is an aesthetic technology that merges artisanal expertise with industrial innovation, with the aim of turning a panel into an object able to stand the test of time and arouse emotions.

The coating process consists in applying a coat of white polyester paint to a CARB2 low-formaldehyde-emission, medium-density fibreboard (MDF) panel and then covering it with a coat of pigmented polyurethane paint. The entire process is carried out by highly professional robotic coating systems that ensure an even distribution of the product over the panel and its edges.

The subsequent drying step, involving the use of an oven at incremental temperatures, crystallises the coating, thereby setting it and making it stable overtime. The polyurethane or acrylic coating is selected with care to ensure compliance with the strictest European emissions and safety regulations.

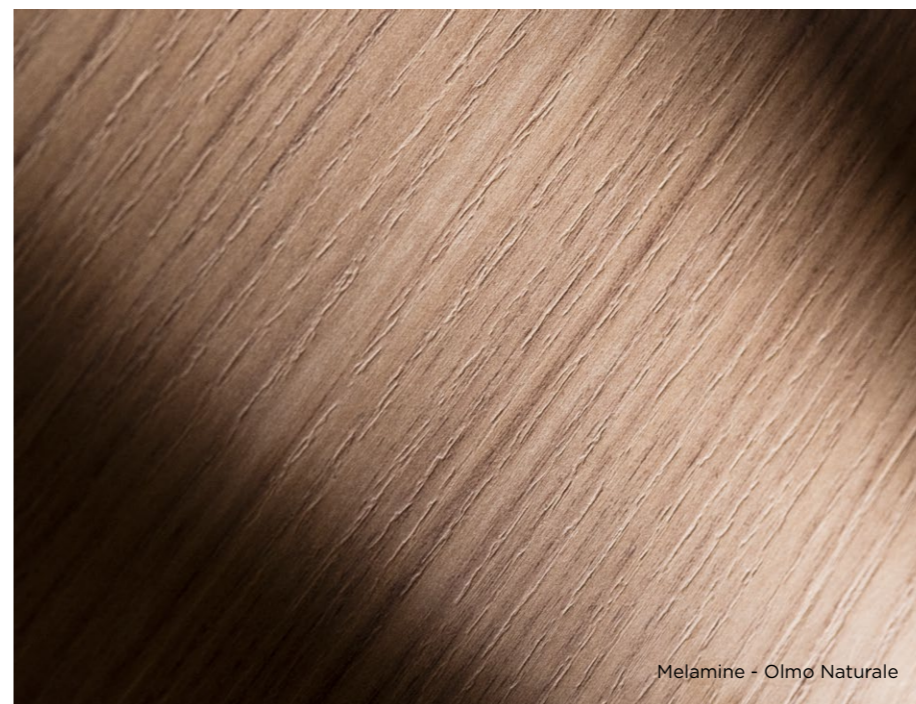
However, the real leap forward came with the advent of water-soluble coatings, which are now used for the whole of the matt family, and several other families, with a view to eventually using only water-based lacquering for our products. This is a sustainable choice because it does away with the use of solvents and decreases the environmental impact of the operation without having a detrimental effect on performance.

For several years now, Armony has been investing in the quality of its lacquered finish programme, developing increasingly sophisticated production cycles and offering original visual effects. By experimenting with the lacquering steps, the Armony Research and Development Centre has succeeded in developing several different families of unique lacquered finishes.

The most innovative proposals include Technolac Lux, a perfect blend of technology, sensory effects and performance. This metallic-based lacquering technique results in a unique three-dimensional texture that gives surfaces visual depth and a rough feel. It is a finish that challenges expectations: from a distance it looks like a stone, whereas close up it reveals a bright, precise grain. It is scratch- and stain-resistant and easy to clean.



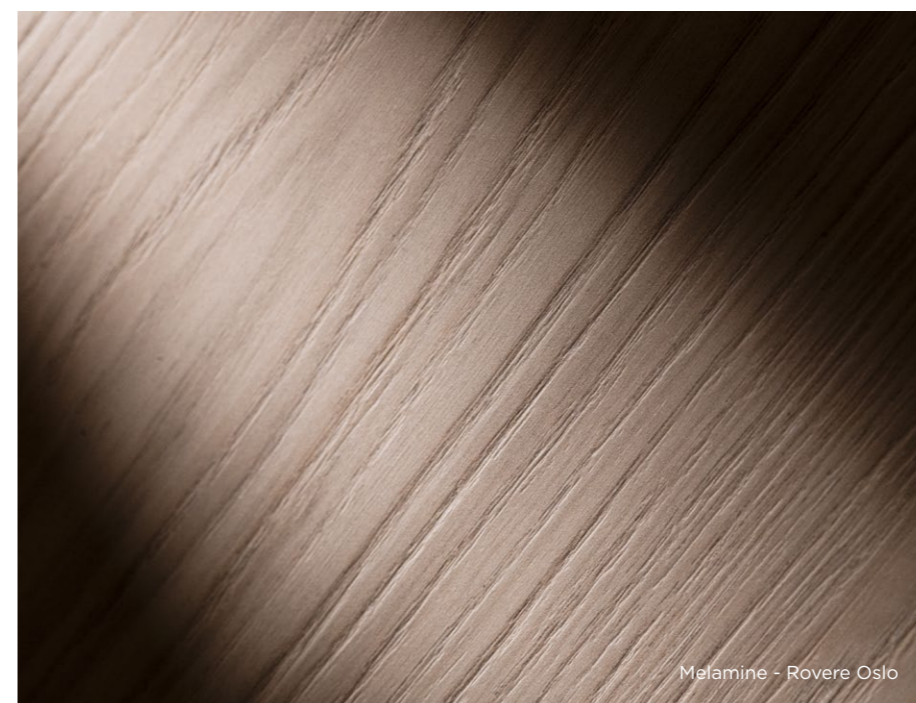
In the photo: Armony Moodboard Configurator



Melamine - Olmo Naturale



Melamine - Quercia Notte



Melamine - Rovere Oslo

Our textured melamines

The result of advanced technologies and a long-standing partnership with Italian and Austrian suppliers - continue to evolve in order to provide a faithful reproduction of woods, stones and metals, that goes beyond the superficial graphic effect to include the 3D feel of the texture. They are what we call 'thermo-structured' surfaces, in which the printing and embossing coincide to offer an exceptionally realistic tactile sensation.

New technical materials

Such as PET and Lamitex, are opening up new opportunities for a contemporary aesthetic dimension, with surfaces that mimic the shine of metals, soft-touch or ultra-matt effects and invisible edges made possible by next-generation machinery and sophisticated polymer adhesives.

UV lacquering

In the world of contemporary design, a surface means more than an exceptional aesthetic result and also has to offer performance, sensory pleasure and longevity. UV lacquering is an outstanding technological evolution that combines flawless aesthetics with superior resistance to wear, making it possible to achieve a perfectly matt or exceptionally glossy surface that is also ultra-resistant and affordable, results that were mutually exclusive until very recently.

These panels, which are available as two different versions - X-Matt (ultra-matt) and X-Lux (ultra-glossy), are manufactured using a hi-tech process consisting in an industrial cycle where the coating is UV lamp-dried in the absence of oxygen, to ensure superficial hardness, chromatic stability and scratch- and stain-resistance. The anti-fingerprint properties achieved with UV lacquering makes it the ideal solution for anyone who loves spending time in the kitchen.



It's all about *people*

The difference lies in people:
in their ability to combine technical know-how
with sensitivity, innovation with responsibility
and tradition with the local community
and a forward-thinking approach.

A solid structure: the workflow.

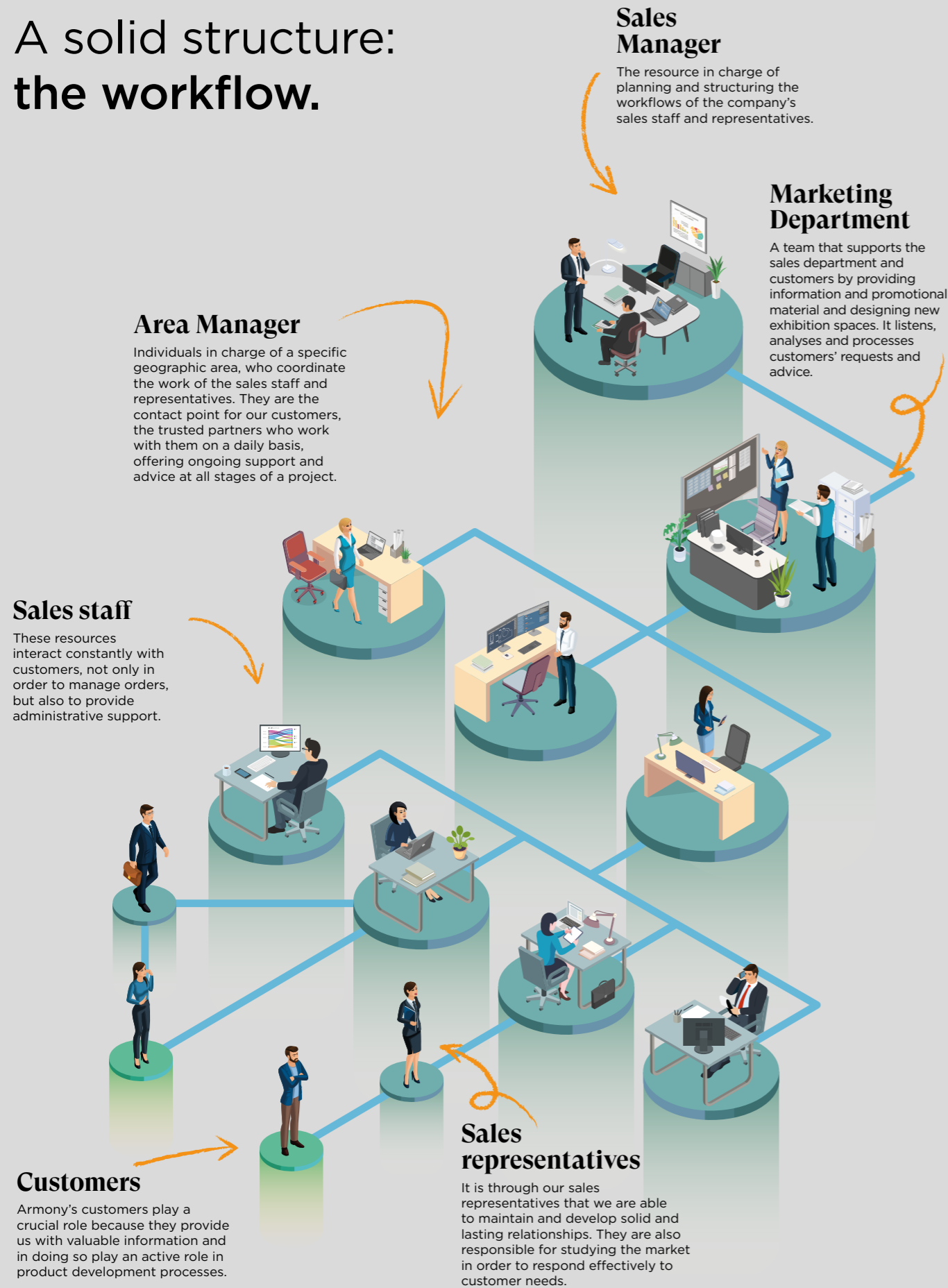
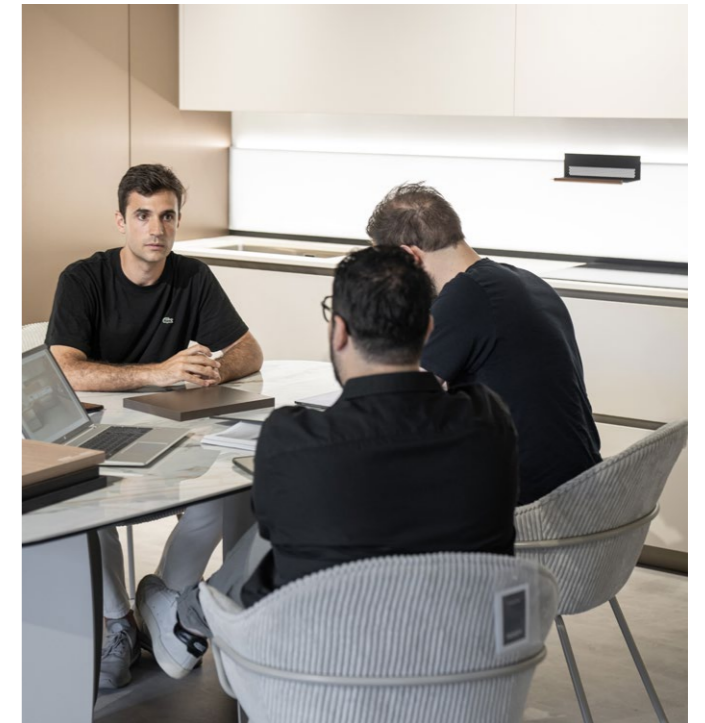


Photo: the 2025 Armony Family Day event

Behind every project and every kitchen there are people: men and women whose drive, expertise and creative flair make the Armony vision possible.

It is them who make the difference, because no technology, no material and no process can be created without the energy and resourcefulness of the person who first imagined it. At Armony, we are convinced that quality originates from a human capital that grows together with the company, in an environment capable of making the most of talent, stimulating new ideas and encouraging sharing. It is this synergy that turns work into culture and culture into design.



The strength of the relationship, the value of the service

The sales service is one of the cornerstones of Armony. Accompanying customers through each stage of the design project - from the initial concept to final completion - is our daily commitment. Each kitchen is the result of ongoing communication, expert advice and dedicated technical assistance, because perfection is never the result of chance, but of a shared method.

The company's ownership, represented by Lucia, Philip and Martial, is a constant presence that actively participates in the business operations and strategic development of the company, by maintaining direct contact with customers and the market.

It is this closeness that makes us different: **a personal and effective approach**, in which professional expertise and interpersonal relationships merge to form an authentic experience.

With a view to improving this service, over the years, the owners have championed various initiatives aimed at nurturing the workforce, thereby consolidating the feeling of belonging to a family and improving the impact Armony has on the local community.

Joining Armony means discovering **a solid business made up of expertise, enthusiasm and people who believe in the value of cooperation.**

Stay with us, follow us on:

armonycucine.it

 **armony_cucine**

 **armonycucine.official**

 **armony-spa**

 **armony_cucine**

 **armonycucine**

ARMONY